

3 BHK
INDEPENDENT FLOORS

Setting
the standard



GREEN
PARADISE
DAYAL BAGH, AGRA



GREEN
PARADISE
DAYAL BAGH, AGRA

About the Project



Experience the glory of green drive through the impressive portal of **GREEN PARADISE**, and you will be struck by pleasant sense of surprise. Suddenly you will experience a sense of peace and homecoming at an island of tranquillity and green abundance.

GREEN PARADISE offers 3 BHK apartments designed to accommodate your dreams. Every apartment is well designed and well illuminated with plenty of natural light and a scenic view of the soothing surroundings.



Experience
the glory
of **green**





Complete Layout Plan



Special Attractions & Highlights

- Single, secured and wide gated entry.
- Intercom connectivity within each unit.
- Well illuminated campus with landscaped garden.
- Children's play area.
- Jogging track to keep fit in.
- 24 hrs water supply.
- 24 hrs. Power Backup.
- Elevators in each block.
- Integrated rain water harvesting system.
- Complete Modular Kitchen.
- Two AC Unit in Each Apartment.





Common Specifications

Structure

- RCC framed structure fill within brick walls.

Common Area

- Lift Facade: Pattern cladding in granite and tiles.
- Staircases: Flooring in Indian Marble treads and risers with SS railings.

External Facade

- Weather-proof paint finish / stone / tile cladding up to certain height.

Woodwork

- All door and windows Chaukhats in Salwood.
- Decorative main entrance doors with good quality door fittings.
- Flush doors with spirit polish/enamel paints.
- Glazed and mesh window doors with MS grills.
- Powder coated hardware fittings.

- Wardrobe in bedrooms and kitchen with mica finish doors.

Electrical

- Concealed copper wiring in PVC conduits.
- Modular switches, TV and Telephone wiring.

Power Backup

- 24 hrs. Backup for entire complex.

Parking

- Reserved car parking for each flat.

Lifts

- Seperate lift in each block.

Security System

- Round the clock 24 hrs parameter security.
- Dedicated intercom linking the main gate and each residence.

Inbuilt Style Features

Living and Dining

- Flooring of 2'x 2' vitrified tiles.
- False ceiling.
- Acrylic emulsion paint in pastel colours on walls and ceiling.
- Decorative main entrance doors with good quality door fittings.
- All door and window Chaukhats in salwood.
- Flush doors with spirit polish/enamel paints.
- Air conditioning unit in the living room.
- Stylish lights, fans and electrical accessories.

Bedrooms

- Flooring of 2'x 2' vitrified tiles.
- Pop work.
- Acrylic emulsion paint in pastel colours on walls and ceiling.
- Air conditioning unit in the master bedroom.
- Stylish lights, fans and electrical accessories.
- Wooden wardrobes.

Kitchen

- Complete modular kitchen.
- Granite counter.
- Stainless steel sink.
- Ceramic tiles up to 2' ft. Height above counter.
- Flooring of 2'x 2' vitrified tiles.
- Acrylic emulsion paint.

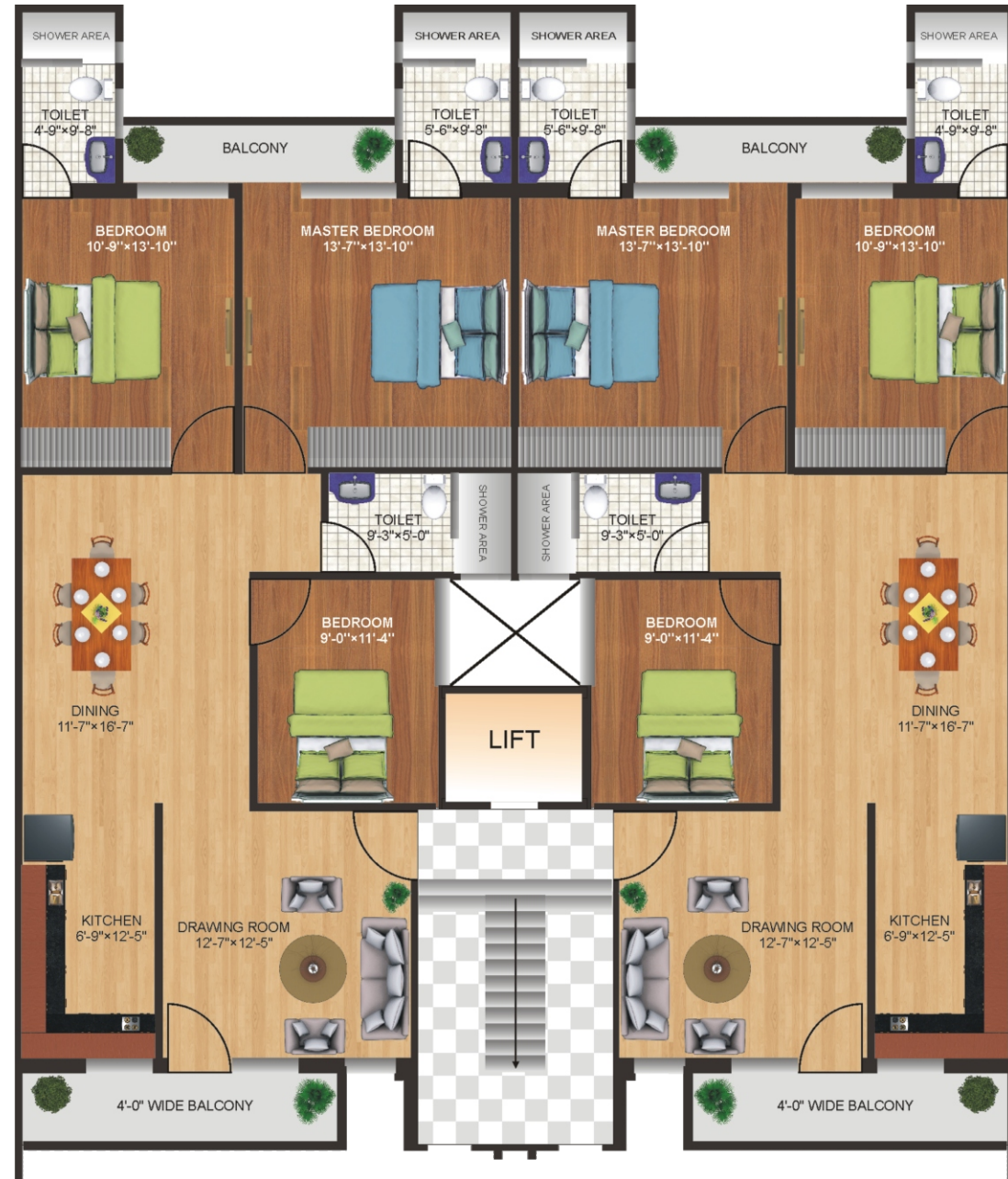
Bathrooms

- Anti-skid tiles flooring.
- Quality chinaware and CP fittings.
- Designer glazed ceramic tiles up to 7' ft. Height.
- Acrylic emulsion paint on the walls and ceiling.
- Geyser in the master bathroom.

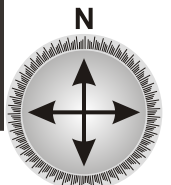
Balconies

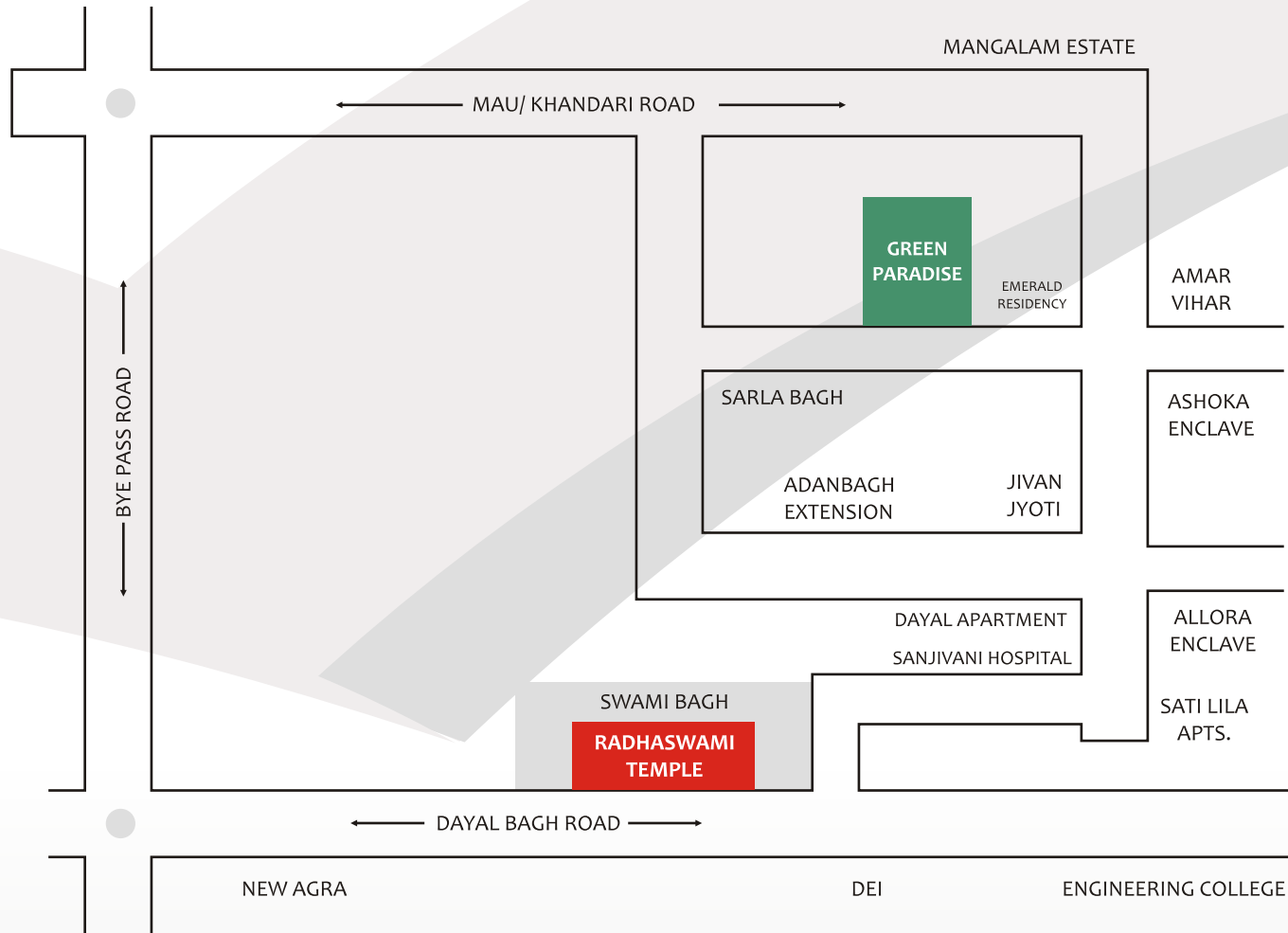
- Anti-skid tiles flooring.
- Weather proof paint finish.
- Stylish decorative lights.

Individual Layout Plan



Super Buildup Area : 1600 Sq. Ft.





Builders & Promoter :



M/s O.P. Housing

Corp. Office : 2/27, Seth Gali, Agra

Ph. : +91-562-4009445

Email : shobhikgoel@gmail.com

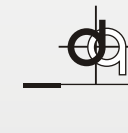
Website : www.opchainsreality.com



Dreams Shelter (P) Ltd.

S-8, IIInd Floor, Raman Tower
Sanjay Place, Agra

Architect :



Designer's Alcove

Ph. : 9997602949

CALL FOR BOOKING : 9897640096, 9927072000

All the images used in this brochure are just for an dramatic representation.
Any specification, layout & material can be changed by the builder without any prior notice.
This brochure is not for legal offering.